

State of Wyoming Corner Record

(In compliance with the **CORNER PERPETUATION AND FILING ACT**, Wyoming Statutes, 1997 Section 33-29-140 et. seq., and the Rules and Regulations of the Board of Professional Engineers and Professional Land Surveyors)

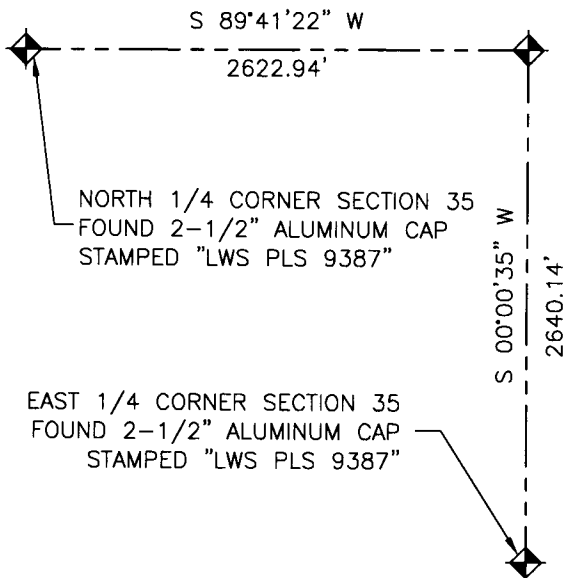
Reverse side of this form may be used if more space is needed.

ORIGINAL RECORD: SET A WHITE SANDSTONE 20X12X6 FOR COR. TO SECTIONS 25, 26, 35, 36.

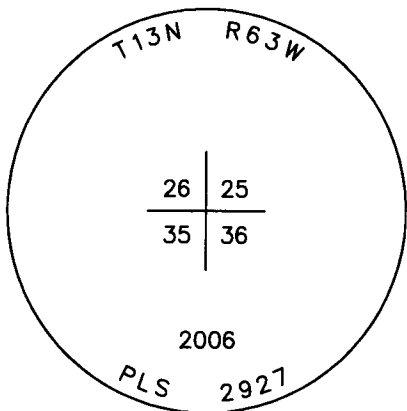
FOUND: 2-1/2" ALUMINUM CAP STAMPED "PLS 2927" IN \odot OF CO. RD 204, 0.6' BELOW GRAVEL ROAD.

SET: SET 2" METAL SHINER WITH MAG. NAIL AS NOTED BELOW

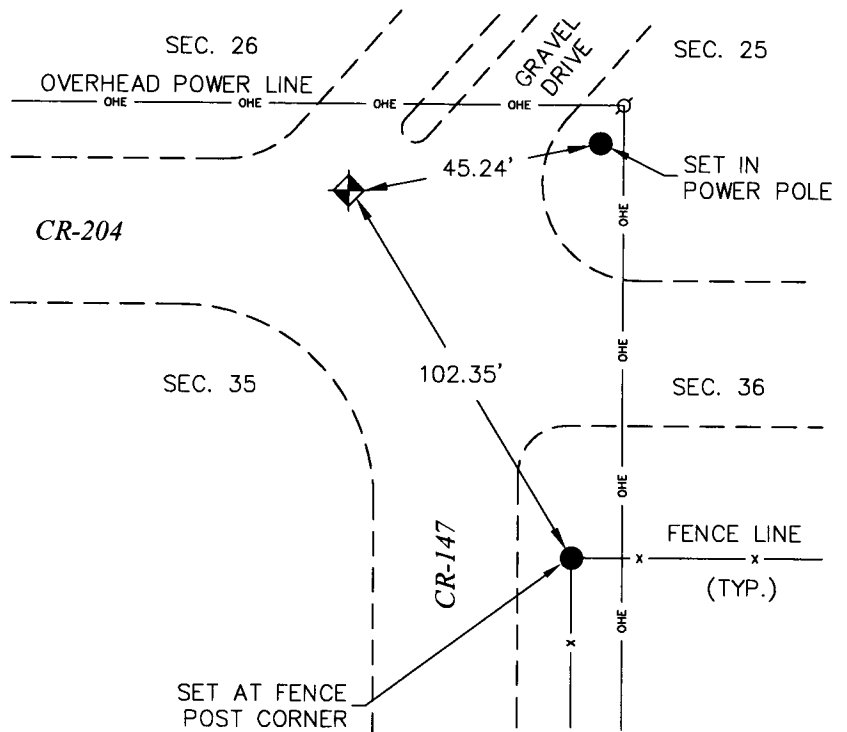
NOTE: BEARINGS AND DISTANCES HEREON ARE BASED ON UTM ZONE 13F - NAD83/NAVD88 AND ARE SHOWN AT GRID. IN ORDER TO OBTAIN GROUND DISTANCES USE A COMBINED SCALE FACTOR OF 1.0006282796



Monument Location



Monument Inscription



Reference Monument Location



N.T.S.

- \blacklozenge = NORTHEAST SECTION OF 35 FOUND 2-1/2" ALUMINUM CAP STAMPED "LS 2927"
- \bullet = SET 2" METAL SHINER WITH MAG NAIL IN FENCE CORNER

Date of Field Work: 01/13/2013

Office Reference: Project #50612

Cross Index Plat

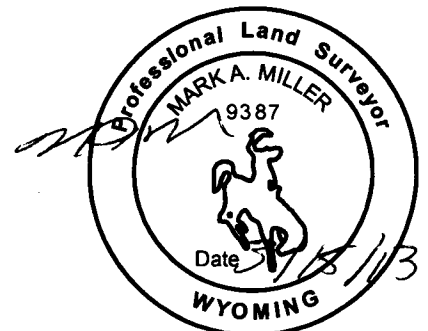
	1	2	3	4	5	6	7	8	9	10	11	12	13	14	15	16	17	18	19	20	21	22	23	24	25		
A																											A
B																											B
C			6		5				4					3					2								C
D																											D
E																											E
F																											F
G																											G
H																											H
J																											J
K																											K
L																											L
M																											M
N																											N
O																											O
P																											P
Q																											Q
R																											R
S																											S
T																											T
U																											U
V																											V
W																											W
X																											X
Y																											Y
Z																											Z

Firm/Agency, Address

Mark Miller, PLS 9387
 LW Survey Co.
 12345 W. Alameda Parkway
 Suite 205
 Lakewood, CO 80228
 Telephone Number: (303) 658-0358

This corner record was prepared by me or under my direction and supervision.

SEAL & SIGNATURE



RECORDED 3/22/2013 AT 2:25 PM REC# 611664 BK# 2327 PG# 679
 DEBRA K. LATHROP, CLERK OF LARAMIE COUNTY, WY PAGE 1 OF 1

Corner Name Northeast Corner Section 35 T 13 N, R 63 W, 6th P.M.

Cross-Index No.: V-21

County: Laramie Wyoming

SBRPEPLS/PLSW: March 1994; PLSW January 1998